

CALIFORNIA MALL

16TH STREET MALL & CALIFORNIA MALL ■ DOWNTOWN DENVER



DEMOGRAPHICS - 2008

Area	Daytime Population	Population	Avg. HH Income
1-MILE	100,386	25,379	\$50,098
2-MILE	230,679	192,339	\$53,250
5-MILE	377,278	414,069	\$55,998

Traffic Counts (two-way) *Highest Pedestrian Count Downtown!

16th Street & California	12,996 pedestrians per day
16th Street Mall	60,000 riders per weekday on RTD shuttle
RTD Light Rail	D Line stops here 96 times per day

*Pedestrian counts provided by the Downtown Denver Partnership

FEATURES

- ✓ *The busiest intersection of the 16th Street Mall*
- ✓ *Excellent exposure and identity*
- ✓ *The phenomenal mix of business traffic, tourists, conventioners and residents make this a great location*
- ✓ *Join Denver Metro Convention & Visitor Bureau, Washington Mutual, Arbys, Chipotle & Einstein Bros.*

303.399.2555

www.gartproperties.com

Susan Cantwell ■ scantwell@gartproperties.com

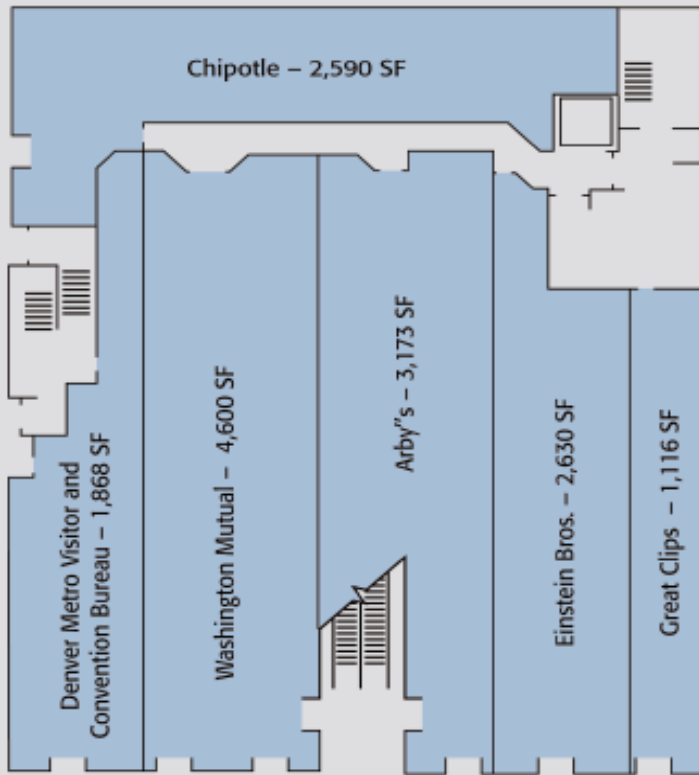
Derek Henry ■ dhenry@gartproperties.com

Gart
gartproperties

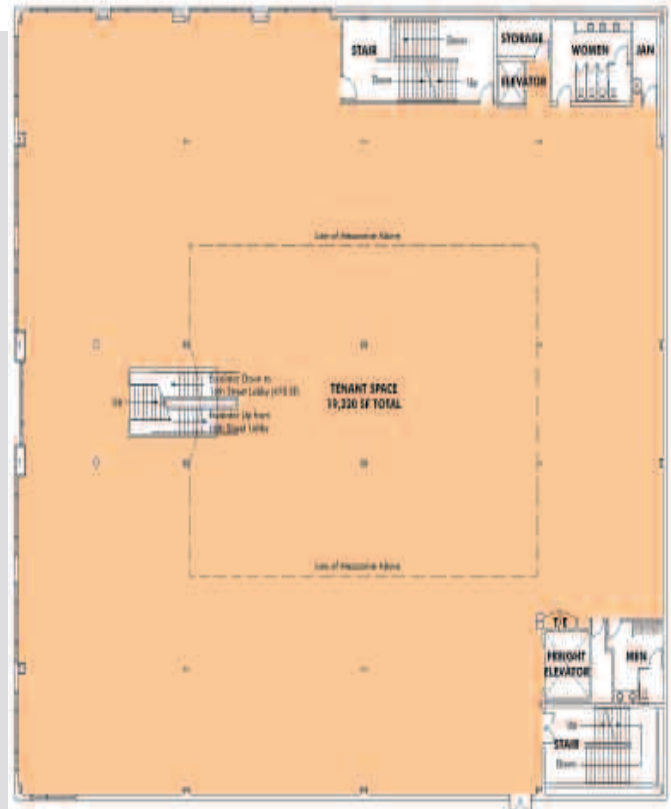
Additional information on back side ►

CALIFORNIA MALL

FIRST FLOOR (street level)



16TH STREET MALL



303.399.2555 www.gartproperties.com

Susan Cantwell ■ scantwell@gartproperties.com

Derek Henry ■ dhenry@gartproperties.com